

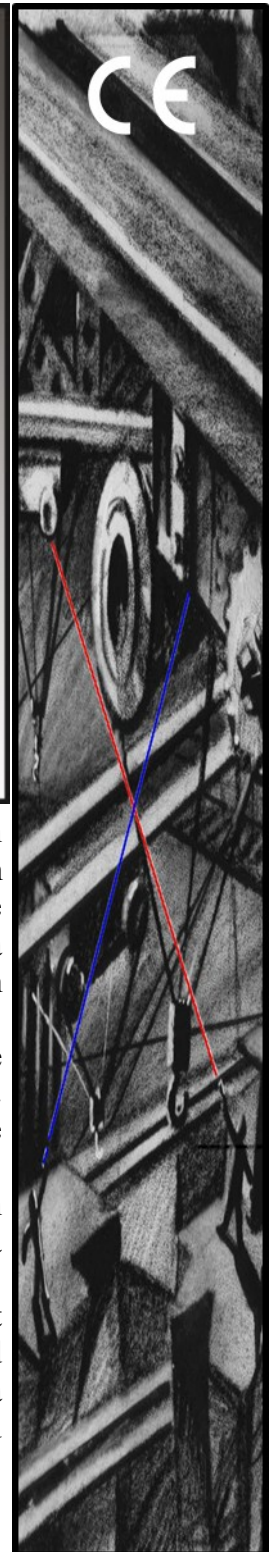
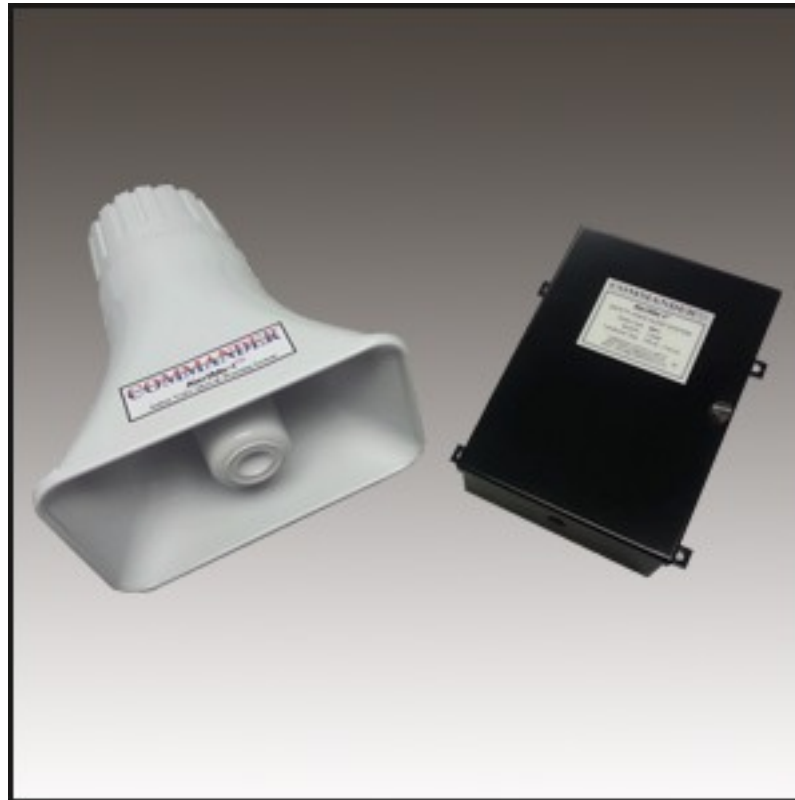
the future is now - be there with us™

Infra-Red & Radio
Remote Control
Crane Systems

COMMANDER™
COMMANDER

Horizontal & Vertical
Collision Avoidance
Crane Systems

Sales Specification for AlertMe-I™
Safety Voice Alert & Warning System (Cranes)
(self program using any spoken language)



The **COMMANDER™ AlertMe-I™** Safety Voice Alert & Warning System has been designed with safety in mind for many highly usable applications. The **AlertMe-I™** system 'input message' can be taught with any spoken language in the country of use before installation. The **AlertMe-I™** system can record up to two messages. Message 1 has a factory test message in English that can be used to prove operation and can be over-written with an active message before installation and setting to work.

To enable triggering of the **AlertMe-I™** systems messages, up to 2 external volt free contacts are required which when closed triggers the system and activates message 1 or 2 (for example for directional announcements (warnings). The trigger source can be automatic or initiated by the operator.

The **AlertMe-I™** horn/speaker and control module are mounted separately so that each can be placed into the most suitable position for access and audible effect. An interface/data cable is supplied (see over).

The **AlertMe-I™** system is usually installed on overhead cranes which can also benefit from a **COMMANDER™** automated crane detection system for collision avoidance and can be used for one of the **AlertMe-I™** trigger sources. The system can be connected to a remote control system and used instead of a Klaxon. The audible warning emitted is an aid to operators and others in the workplace. It is not intended for playing music.

The **AlertMe-I™** system can be easily connected to a power source (see next page).

Technical Details for **AlertMe-I™** Safety Voice Alert & Warning System (Cranes) (self program using any spoken language)

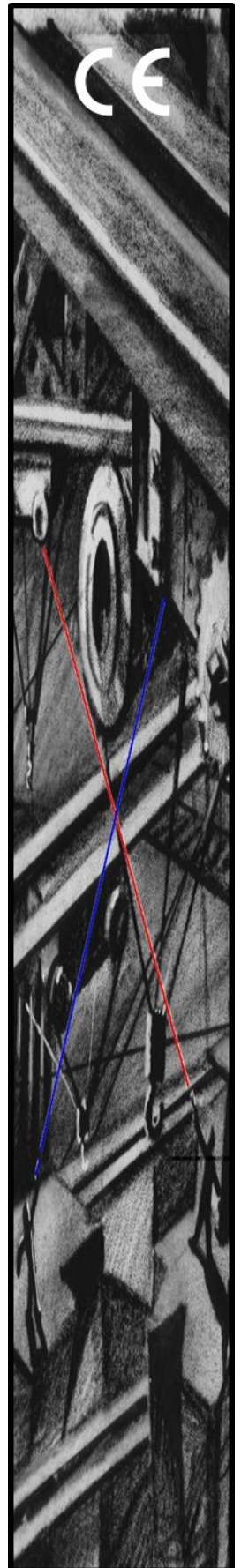


AlertMe-I™ Safety Voice Alert System Control Module

| | |
|---------------------------|--------------------------------------------------------------------------------------------------------------------------------------------------------------------------------------------------------------------------------------------------------------------------------------|
| Enclosure | Sheet Steel with hinged access door |
| Size | 200H x 150W x 65D (mm) |
| Finish | Black Powder coated |
| Cable ports provided | Qty 1, @ 20mm dia. |
| External Speaker Port | Qty 1, connector for external speaker |
| AC Voltage Version | 42V/48-110V/120-230V AC (3 formats specify on order) |
| DC Voltage Version | 12 or 24V DC (regulated AC derived) |
| DC Battery Backup | BatBak™ option if AC power loss and warning still required |
| Power & Interface | Plug & socket I/O terminal connectors |
| Environmental | -10°C to +55°C IP54 |
| Trigger Inputs | Qty 2 (from volt free source (relay/contact)) for 2 messages |
| Internal Setting Features | i) Built In Microphone ii) Message M1 or M2 select switch (test message on M1) iii) Record Button (press and hold to record) iv) Play Button (for test/message playback) v) Internal Speaker (for set up) (fixed volume) vi) External Volume Control for installation |
| Diagnostics | Internal LED's |

AlertMe-I™ Safety Voice Alert System Horn (horn supply type may vary)

| | |
|---------------|-----------------------------------------------------------------|
| Connectivity | The horn is supplied with a ready fitted 3M cable and connector |
| Enclosure | ABS type |
| Environmental | -10°C to +55°C IP54 |
| Size | 150L x 100W x 60D (mm) |
| Mounting | In-built for suspend or foot mount and with tilt feature |
| Finish | Gray |
| Output | 30 Watt, 8 W |



© Copyright 2015

Commander Controls Limited, 12 High Hazels Road, Cotgrave, Nottinghamshire, NG12 3GZ, U.K.
Tel: +44 (0) 115-989-0100; Fax: +44 (0) 115-989-0200; www.commander.co.uk; sales@commander.co.uk
Publication CCL/**AlertMe-I™** Safety Voice Alert System (Cranes) Issue 01-06-2015

